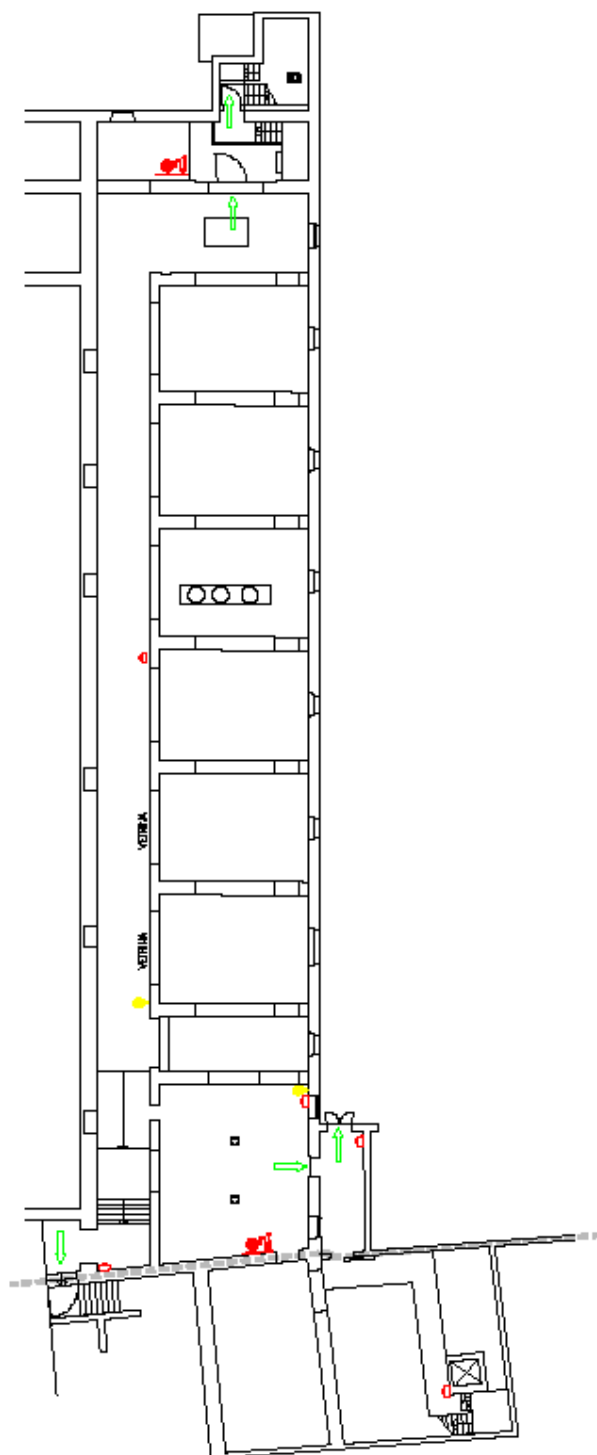


# ALLEGATO "D"

## Planimetrie e schema con relative metrature

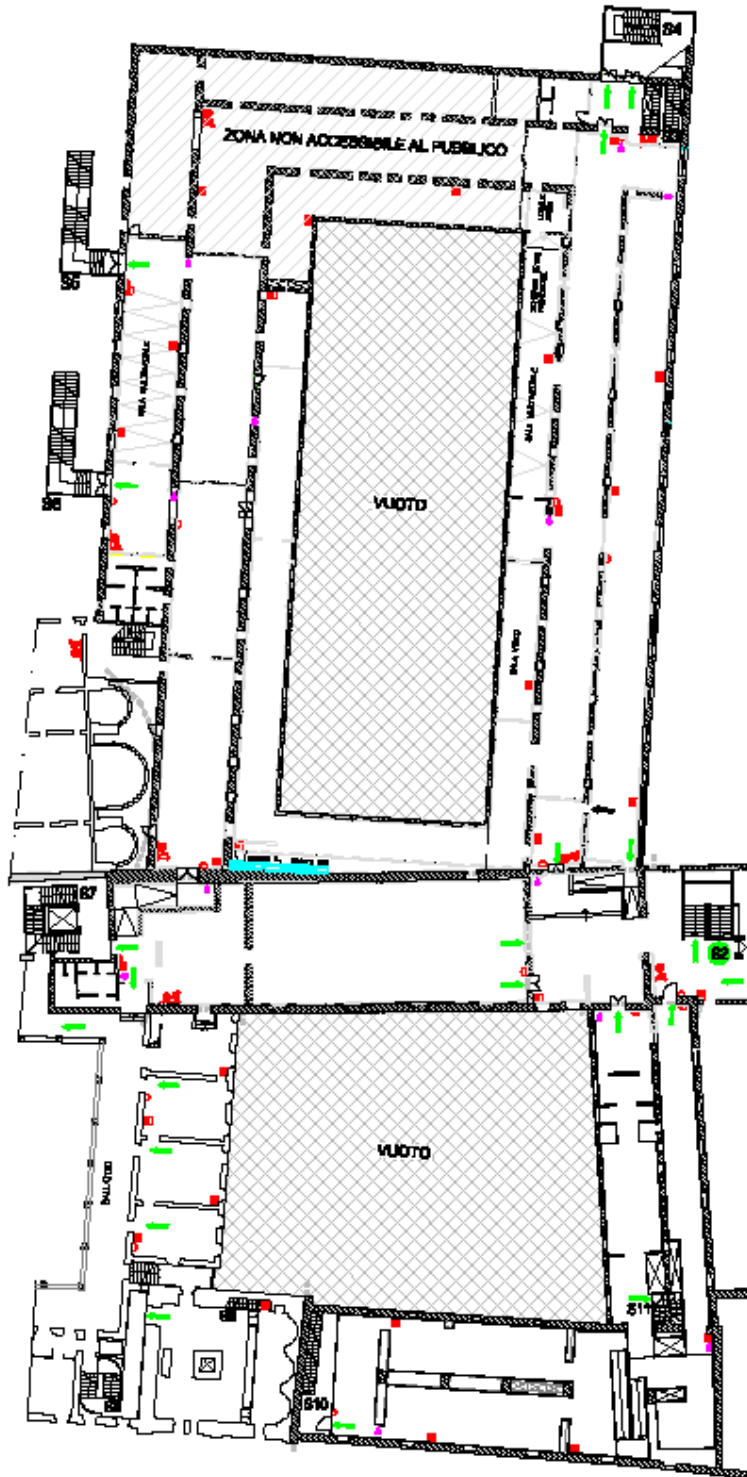
### Allegato A – Museo di Santa Giulia

#### Piano Interrato



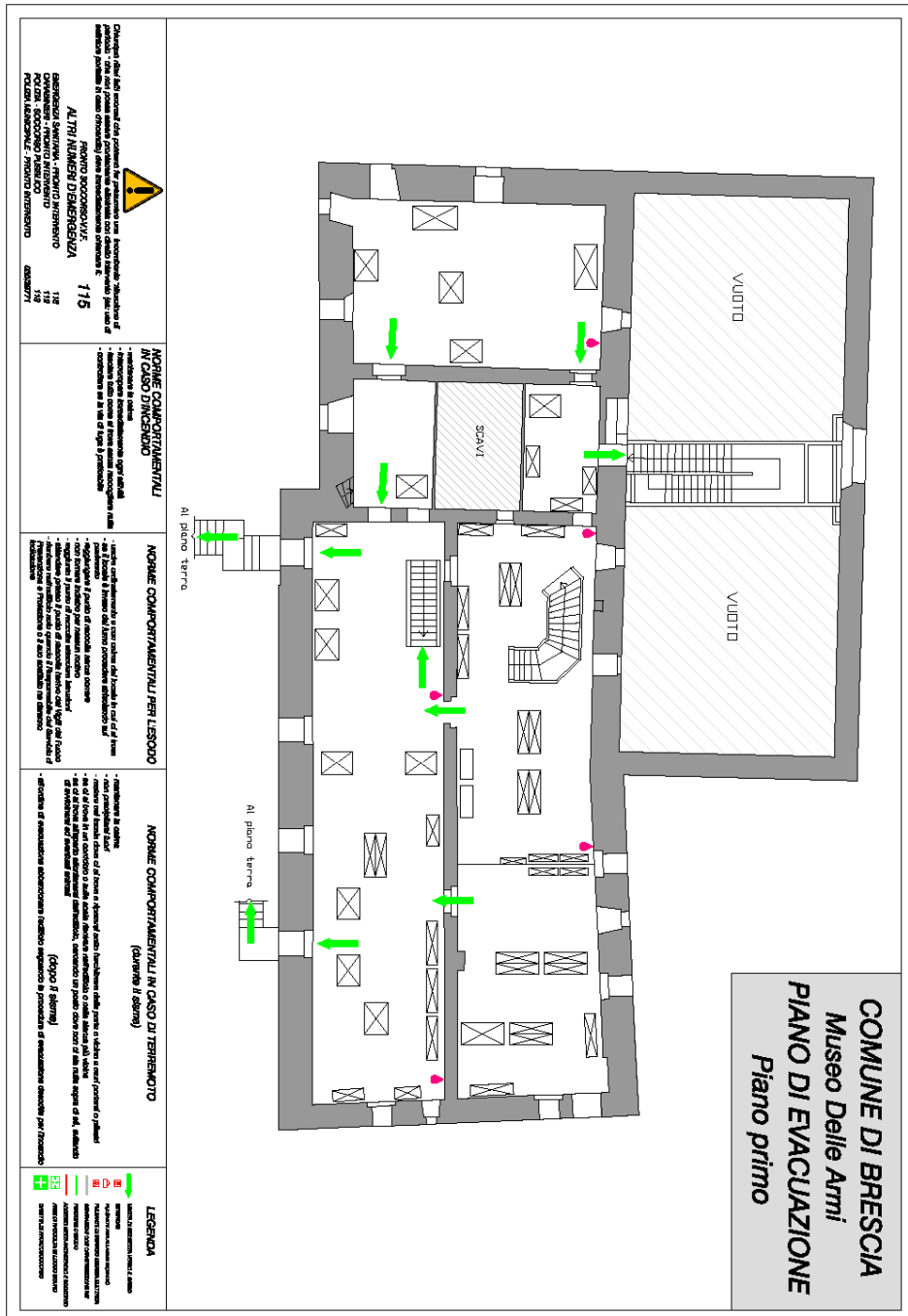


Primo Piano





# Primo Piano



**Allegato B – Museo del Risorgimento**

Piano Terra

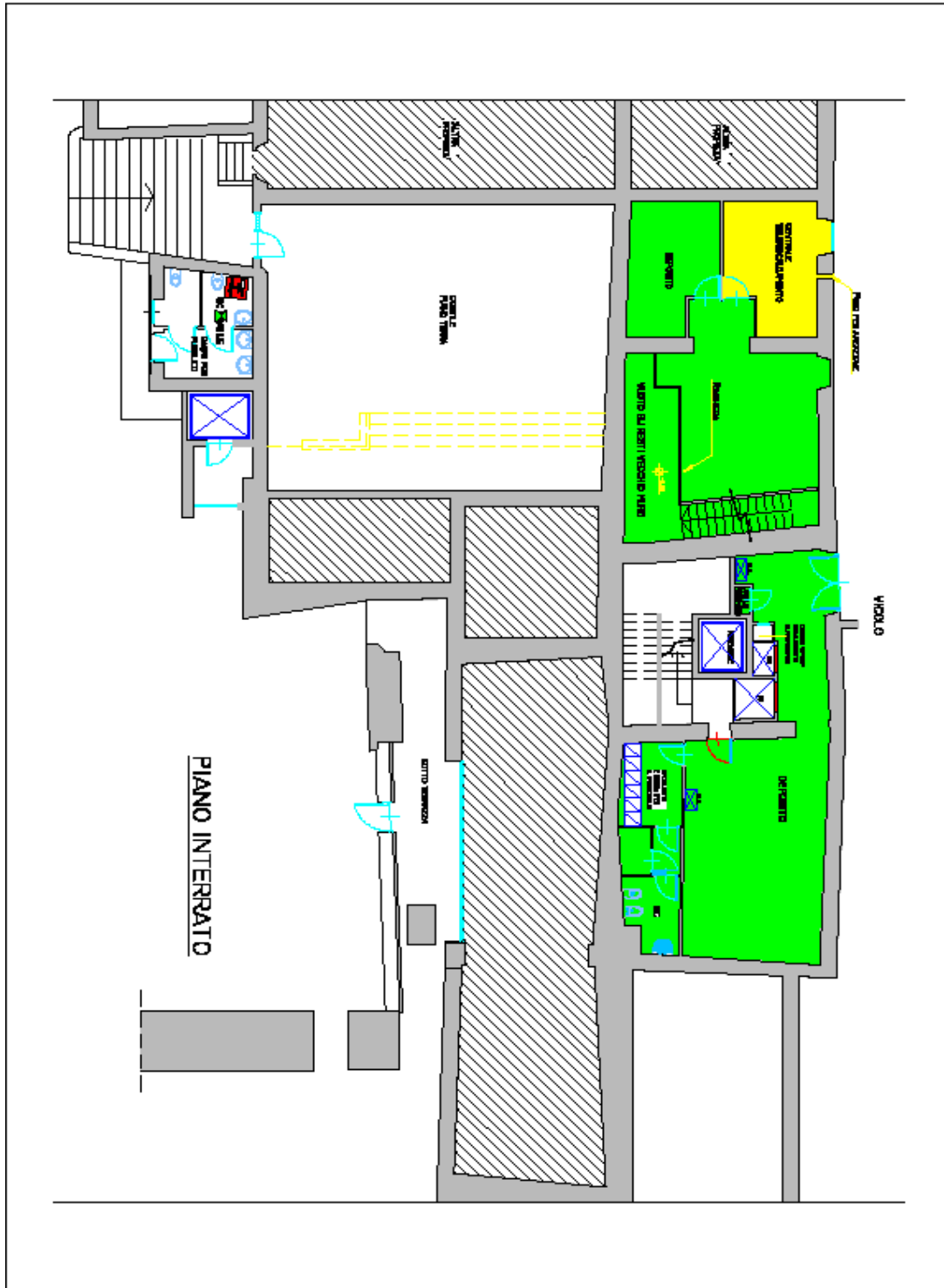


Primo Piano

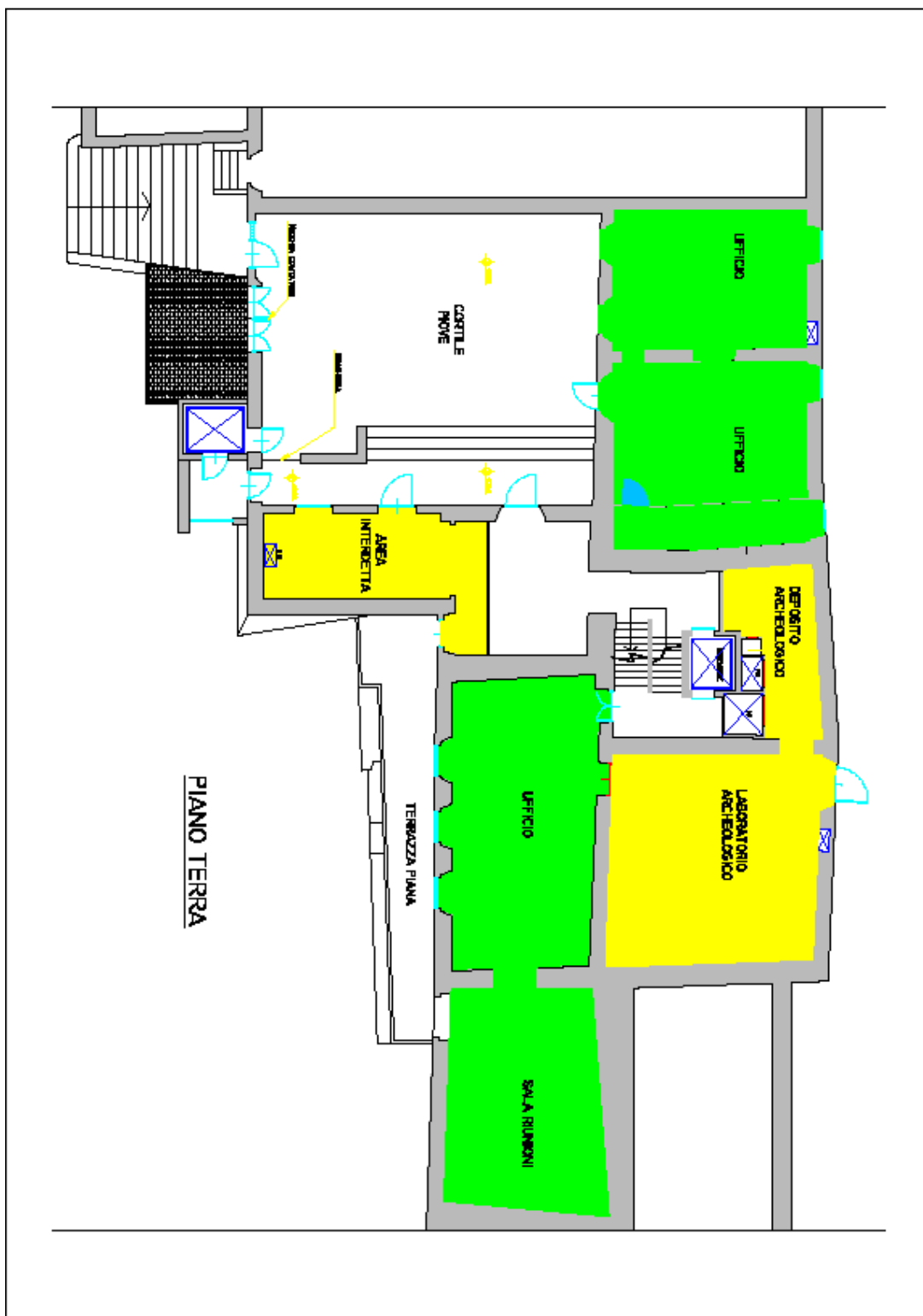


**Allegato C – Palazzo Pallaveri (uffici sede Fondazione)**

**Piano Interrato**

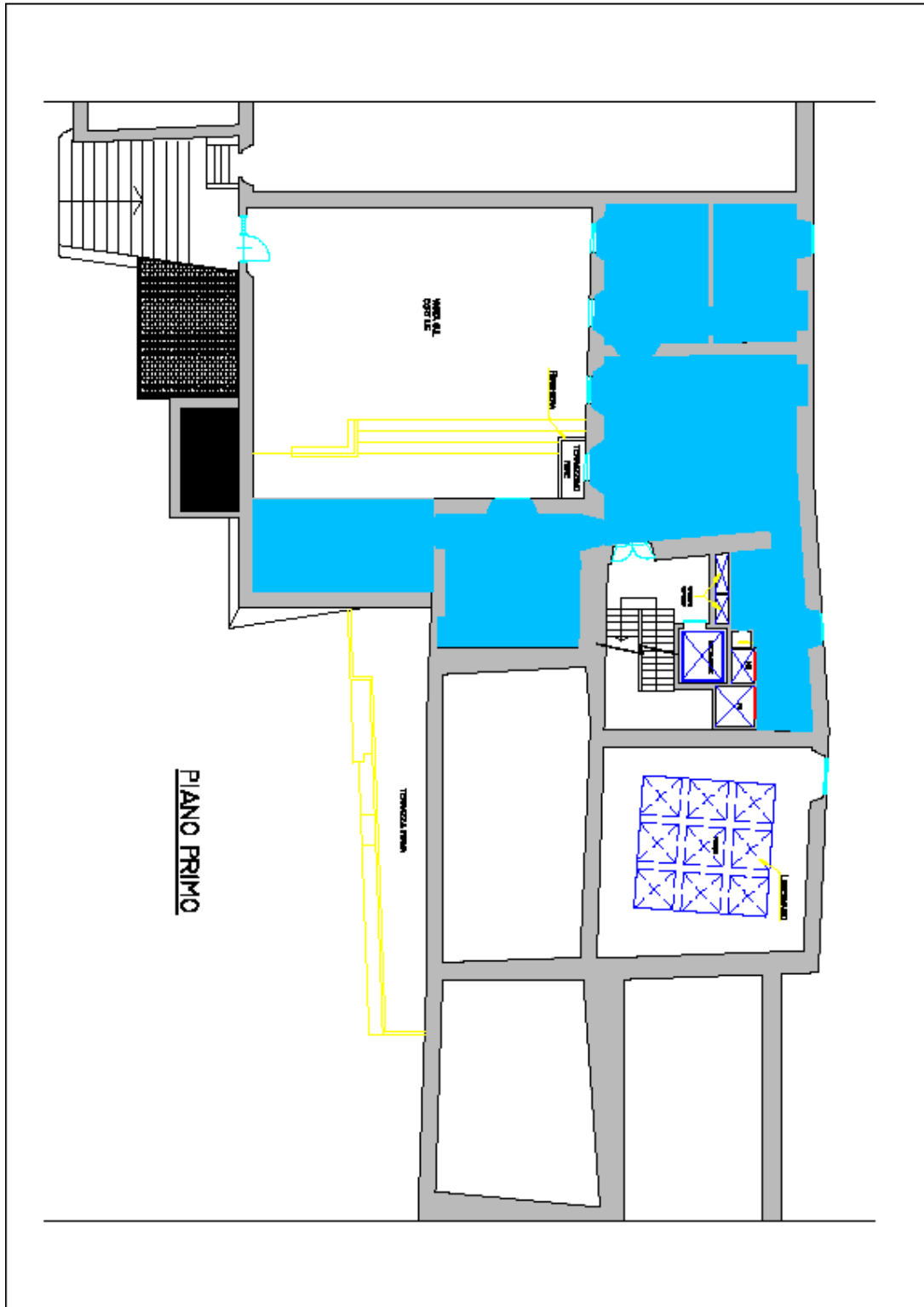


Pianto Terra

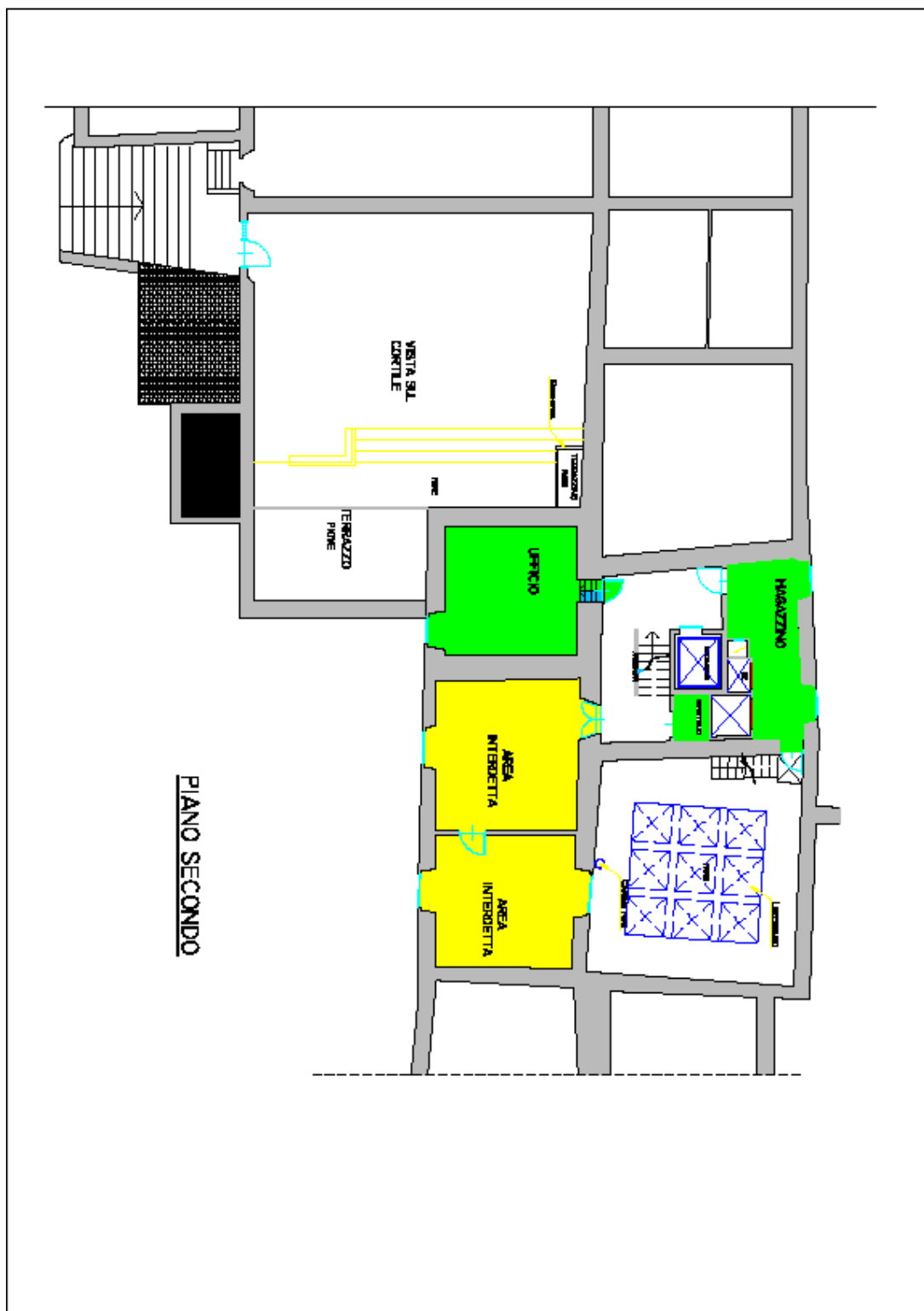




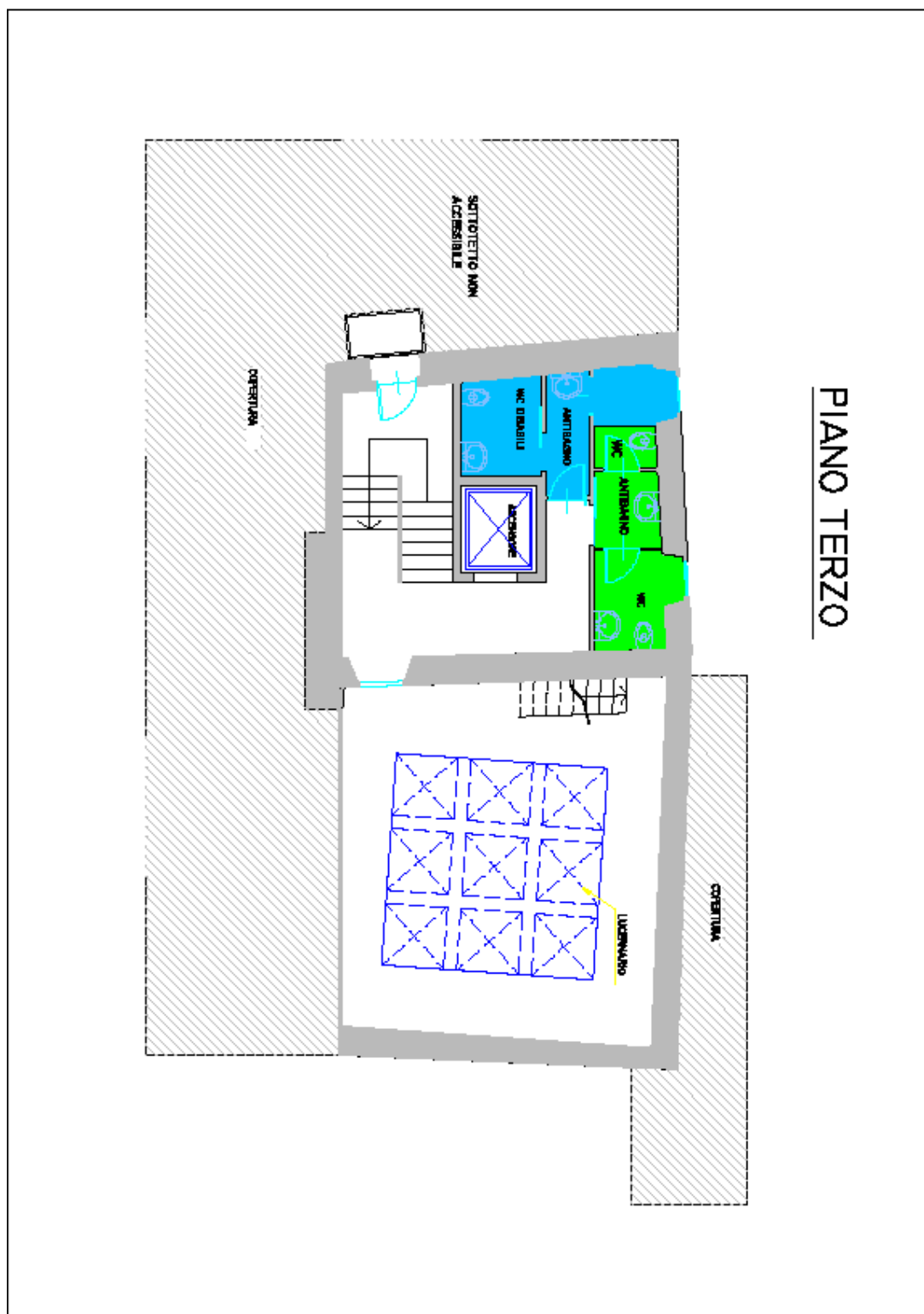
Primo Piano



Piano Secondo



Piano Terzo



## DETTAGLIO METRATURE

<i><b>Allegati Capitolato</b></i>	<i><b>Sedi</b></i>	<i><b>Dettaglio aree</b></i>	<i><b>mq</b></i>
<b>Allegato A</b>	Museo di Santa Giulia	Superficie coperta	7.311,50
		Servizi igienici	184,50
		Cortili e porticati	991,00
<b>Allegato B</b>	Museo delle Armi	Superficie coperta	738,50
	Museo del Risorgimento	Superficie coperta	1.254,00
		Servizi igienici	30,00
		Zona mostre (Piccolo Miglio)	631,00
Zona mostre (Grande Miglio)	249,00		
<b>Allegato C</b>	Palazzo Pallaveri (uffici sede Fondazione)	Superficie coperta	168,31
		Servizi igienici	24,16
		Cortile e terrazza	58,60